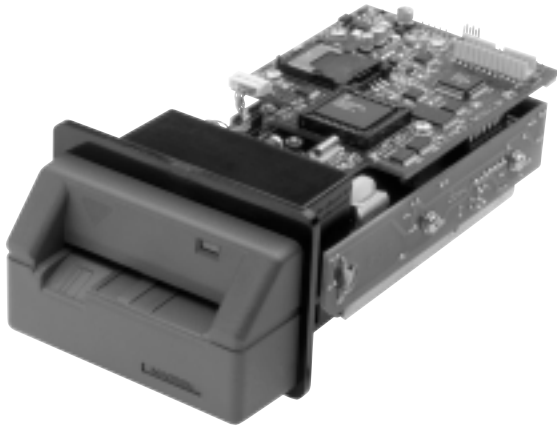


HYBRID

## INTELLISTRIPE 320 MOTORIZED READER



Shown with B Extended Bezel



Shown with D Bezel

### FEATURES:

- EMV Level 1 approved
- Supports ISO 7816 T=0 & T=1 microprocessor cards
- Supports high speed smart card interface with transfer data rates of up to 115Kbps
- Support for popular memory cards
- Intelligent, command driven RS-232 interface
- Single socket on-board Security Access Module (SAM)
- Interface support for optional PCB with 6 SAM sockets
- ISO 8 contacts
- Reads up to three tracks of magnetic stripe data
- Optional security gate
- Power-fail card-eject electronics
- FLASH programmable
- Optional desktop enclosure available
- Rugged, zinc die-cast chassis

SPECIFICATIONS:

**Card Speed:**

7 to 10 ips (17,78 to 25,40cm/sec)

**MTBF:**

Electronics: 125,000 hours

Head: 1,000,000 passes

SC Contacts: 1,000,000 insertions

**Input Voltage:**

12.0 VDC ± 5%

**Current:**

1 mA max

100 mA typical (with motor off)

**Audible Noise:**

55db at 39.4" (1,0m)

**Card Travel Time:**

400 ms ±20% maximum input or eject time

**Read Capabilities:**

Tracks 1, 2, 3; Lo-Co or Hi-Co,

100% of magnetic stripe

**Interface:**

RS-232

**Card Types:**

Smart cards per ISO 7816; magnetic stripe

cards per ISO 7810, 7811, 7813;

including AAMVA and California Driver's Licenses

**Accept Embossed Cards:**

Per ISO 7811-1/3

**Chassis Mounting Options:**

With "A" & "B" bezel, screws mounted from under unit, magstripe up and to the left.

With "A" & "C" bezel, screws mounted from above unit, magstripe down and to the right.

With "A" bezel only, screws mounted from above or under unit.

**Dimensions (Core Chassis):**

Length (with "A" bezel): 5.60 in. (152,24mm)

Width (with "A" bezel): 3.26 in. (82,8mm)

Height (with "A" bezel): 2.17 in. (55,14mm)

Cable length: 6 ft. ± 0.1 ft. (1,83m ± 0,03m)

Adapter cable length: 6.25 ft. (1,91m)

**Weight:**

Reader with: "A" bezel: 15.33 oz. (434,68gr)

"B" or "C" bezel w/ screws: 1.37 oz. (38,88gr)

Reader cable: 4.15 oz. (117,76gr)

SAM ranch with cable: 2.90 oz. (82,24gr)

AC adapter regulator

w/ power cord: 11.87 oz. (336,6gr)

OPERATING ENVIRONMENT:

**Temperature**

Operating: 32°F to 122°F (0°C to 50°C)

Storage: -40°F to 158°F (-40°C to 70°C)

**Humidity**

Operating: 5% to 95% noncondensing

Storage: 5% to 95% noncondensing

**Altitude**

Operating: 0-10,000 ft. (0-3,048m)

Storage: 0-50,000 ft. (0-15,240m)

STANDARD CONFIGURATIONS:

Description	Part Number
3 Track, RS-232, with A Bezel:	16050326
3 Track, RS-232, with B Bezel, Stripe Up:	16050327
3 Track, RS-232, with C Bezel, Stripe Down:	16050328
3 Track, RS-232, with D Bezel, Stripe Up or Stripe Down:	16050329